

# AVENIA

Residences. Floors 5 to 15. East



AVENIA

# Boutique Living with Global Style

Avenia is where style meets  
the essence of luxury in the  
heart of Aventura.

---

Curated by Fendi Casa and inspired by the maison's artisanal  
heritage and modern vision, Avenia is where high design  
meets savoir-faire, for a new living experience that comes to  
life with precision, glamour and a splash of the unexpected.

---

AVENIA  
INTERIORS BY  
**FENDI**  
CASA

Residences. Floors 5 to 15. East

# A Lifestyle by Fendi Casa

Fendi Casa brings its artisanal heritage and modern vision to Aventura living.

Drawing on a century of groundbreaking style and craftsmanship and more than three decades of trendsetting home décor, the legendary Italian design house presents a new level of luxury and style to elevate Aventura living.

The design visionaries at Fendi Casa bring inspiration to life, rendering moods and moments with material precision and prolific skill. Come home to a place where experience and style forms an elevated aesthetic.



---

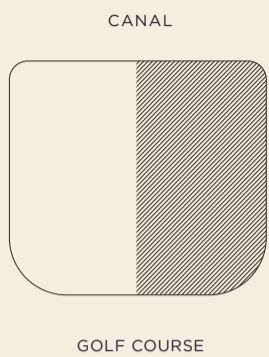
## The Residences

### VISION

- 22 residences designed by Fendi Casa
- Private marina with a house boat slip
- Three and four-bedroom half floor residences
- Only two residences per floor
- Serene city, water and sprawling golf course views
- Personalized concierge and guest services
- Pet-friendly community

### FORM

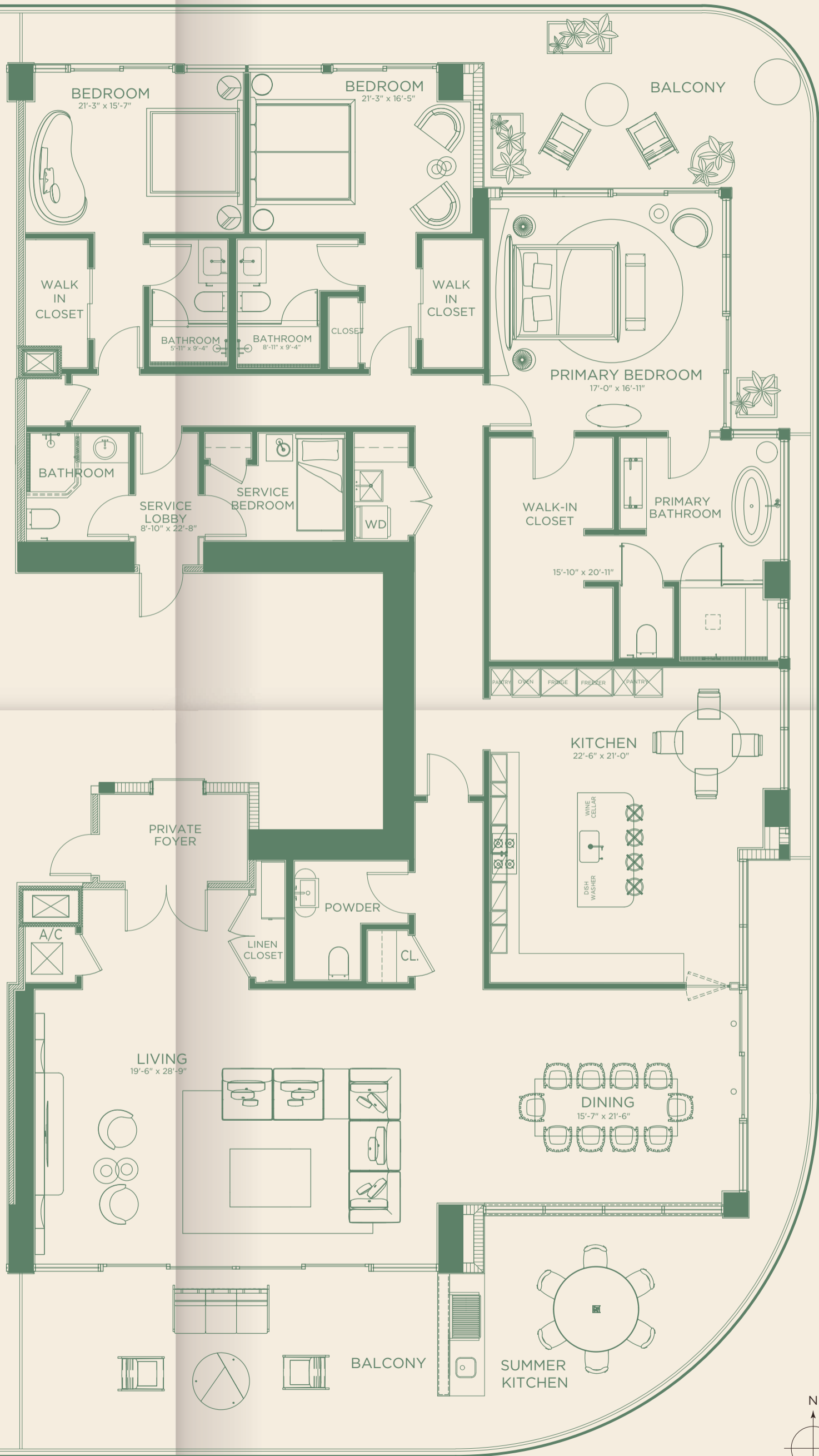
- Exceptional half floor residences with three exposures
  - Private elevator lobby per residence
  - Stylish custom Italian kitchens with quartz countertops
  - Sub-Zero and Wolf appliance suite
  - Luxuriously appointed primary suite
  - Exquisite Fendi Casa built-in walk-in closet in primary suite
  - Laundry room with full-size washer/dryer
  - Integrated smart home technology
  - Designer bathroom faucets and fixtures
  - Pre-wired for WiFi and motorized window shades
  - Dedicated service entrance and quarters
-



## East Residences FLOORS 5 - 15

3 Bedroom, 4.5 Bathroom  
Interior: 3,505 SQFT | 325 SM  
Terraces: 1,345 SQFT | 125 SM

Total: 4,850 SQFT | 450 SM



“ This is our idea of interior design: elegant and light, classic yet innovative. ”

— FENDI CASA



---

## Live The Vision

### LOCATION & SALES GALLERY

20605 NE 34th Avenue. Aventura, FL 33180

+1 786 886 1587 | [aveniaaventura.com](http://aveniaaventura.com)

### DEVELOPMENT

Vertical Development

### EXCLUSIVE SALES & MARKETING

Douglas Elliman Development Marketing



WE ARE PLEDGED TO THE LETTER AND SPIRIT OF THE U.S. POLICY FOR ACHIEVEMENT OF EQUAL HOUSING OPPORTUNITY THROUGHOUT THE NATION. WE ENCOURAGE AND SUPPORT AN AFFIRMATIVE ADVERTISING AND MARKETING PROGRAM IN WHICH THERE ARE NO BARRIERS TO OBTAINING HOUSING BECAUSE OF RACE, COLOR, RELIGION, SEX, HANDICAP, FAMILIAL STATUS OR NATIONAL ORIGIN.

THIS ADVERTISEMENT IS NOT AN OFFERING. ORAL REPRESENTATIONS CANNOT BE RELIED UPON AS CORRECTLY STATING REPRESENTATIONS OF THE DEVELOPER. FOR CORRECT REPRESENTATIONS, MAKE REFERENCE TO THIS BROCHURE AND TO THE DOCUMENTS REQUIRED BY SECTION 718.503, FLORIDA STATUTES, TO BE FURNISHED BY A DEVELOPER TO A BUYER OR LESSEE. THE ARTIST REPRESENTATIONS AND INTERIOR DECORATIONS, FINISHES, APPLIANCES AND FURNISHINGS ARE PROVIDED FOR ILLUSTRATIVE PURPOSES ONLY. DEVELOPER MAKES NO REPRESENTATIONS OR WARRANTIES EXCEPT AS MAY BE SET FORTH IN THE OFFERING PLAN. DEVELOPER RESERVES THE RIGHT TO SUBSTITUTE MATERIALS, APPLIANCES, EQUIPMENT, FIXTURES AND OTHER CONSTRUCTION AND DESIGN DETAILS SPECIFIED HEREIN WITH SIMILAR MATERIALS, APPLIANCES, EQUIPMENT AND/OR FIXTURES OF SUBSTANTIALLY EQUAL OR BETTER QUALITY. ALL DIMENSIONS ARE APPROXIMATE AND SUBJECT TO NORMAL CONSTRUCTION VARIANCES AND TOLERANCES. SQUARE FOOTAGE EXCEEDS THE USABLE FLOOR AREA. DEVELOPER RESERVES THE RIGHT TO MAKE CHANGES IN ACCORDANCE WITH THE TERMS OF THE OFFERING PLAN. PLANS AND DIMENSIONS MAY CONTAIN MINOR VARIATIONS FROM FLOOR TO FLOOR. REFER TO [WWW.AVENIAAVENTURA.COM](http://WWW.AVENIAAVENTURA.COM) FOR FULL LEGAL DISCLAIMERS.

# AVENIA

Residences. Floors 5 to 15. West



AVENIA

# Boutique Living with Global Style

Avenia is where style meets  
the essence of luxury in the  
heart of Aventura.

---

Curated by Fendi Casa and inspired by the maison's artisanal  
heritage and modern vision, Avenia is where high design  
meets savoir-faire, for a new living experience that comes to  
life with precision, glamour and a splash of the unexpected.

---

AVENIA  
INTERIORS BY  
**FENDI**  
CASA

Residences. Floors 5 to 15. West

# A Lifestyle by Fendi Casa

Fendi Casa brings its artisanal heritage and modern vision to Aventura living.

Drawing on a century of groundbreaking style and craftsmanship and more than three decades of trendsetting home décor, the legendary Italian design house presents a new level of luxury and style to elevate Aventura living.

The design visionaries at Fendi Casa bring inspiration to life, rendering moods and moments with material precision and prolific skill. Come home to a place where experience and style forms an elevated aesthetic.



## The Residences

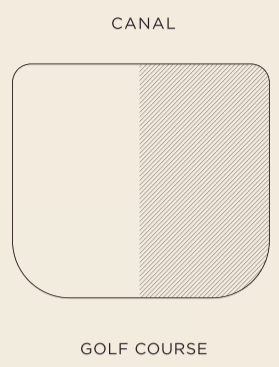
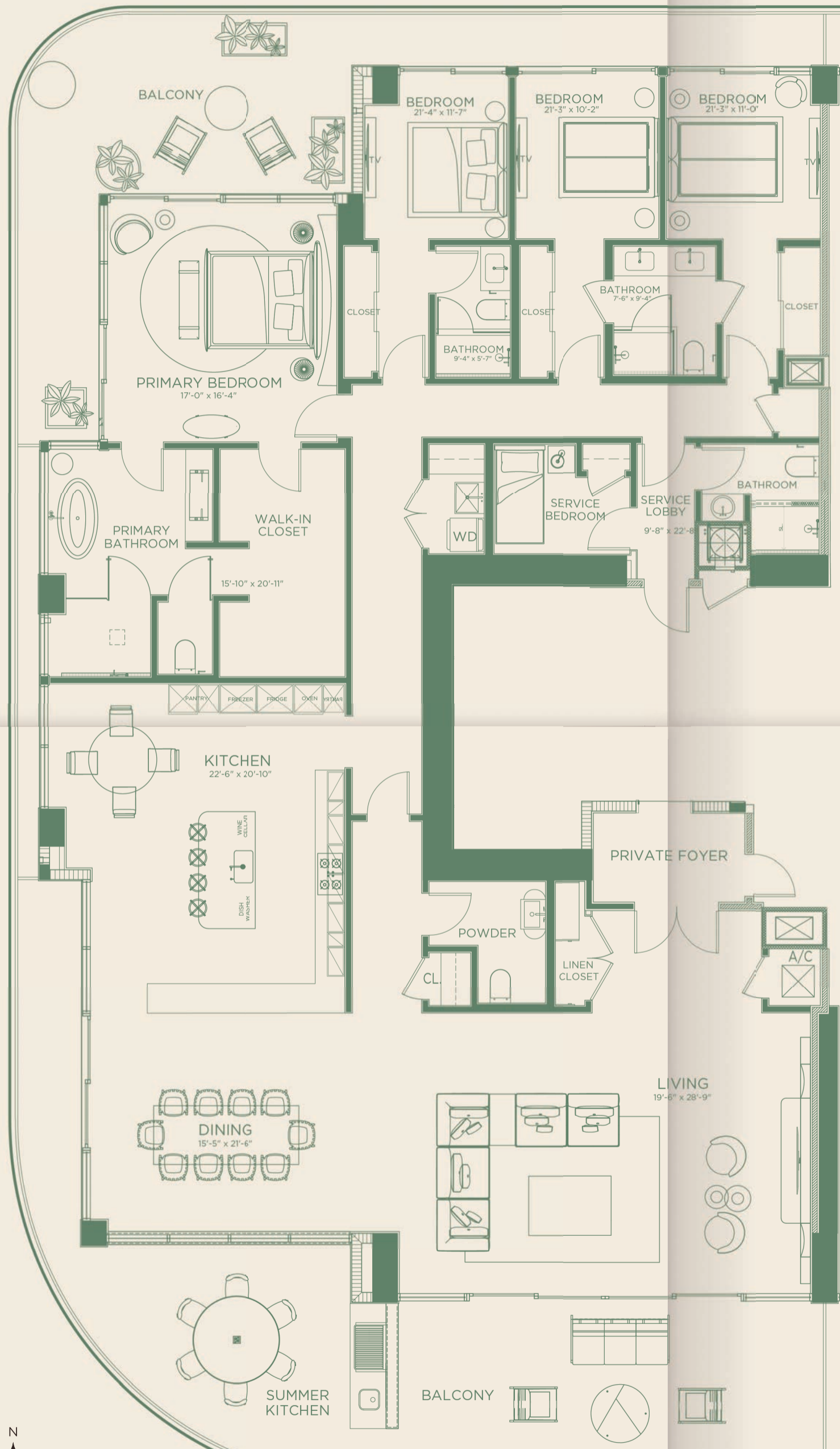
### VISION

- 22 residences designed by Fendi Casa
- Private marina with a house boat slip
- Three and four-bedroom half floor residences
- Only two residences per floor
- Serene city, water and sprawling golf course views
- Personalized concierge and guest services
- Pet-friendly community

### FORM

- Exceptional half floor residences with three exposures
- Private elevator lobby per residence
- Stylish custom Italian kitchens with quartz countertops
- Sub-Zero and Wolf appliance suite
- Luxuriously appointed primary suite
- Exquisite Fendi Casa built-in walk-in closet in primary suite
- Laundry room with full-size washer/dryer
- Integrated smart home technology
- Designer bathroom faucets and fixtures
- Pre-wired for WiFi and motorized window shades
- Dedicated service entrance and quarters





**West Residences**  
FLOORS 5 - 15

4 Bedroom, 4.5 Bathroom  
 Interior: 3,494 SQFT | 324 SM  
 Terraces: 1,345 SQFT | 125 SM  
 Total: 4,839 SQFT | 449 SM

“ This is our idea of interior design: elegant and light, classic yet innovative. ”

— FENDI CASA



---

## Live The Vision

### LOCATION & SALES GALLERY

20605 NE 34th Avenue. Aventura, FL 33180

+1 786 886 1587 | [aveniaaventura.com](http://aveniaaventura.com)

### DEVELOPMENT

Vertical Development

### EXCLUSIVE SALES & MARKETING

Douglas Elliman Development Marketing



WE ARE PLEDGED TO THE LETTER AND SPIRIT OF THE U.S. POLICY FOR ACHIEVEMENT OF EQUAL HOUSING OPPORTUNITY THROUGHOUT THE NATION. WE ENCOURAGE AND SUPPORT AN AFFIRMATIVE ADVERTISING AND MARKETING PROGRAM IN WHICH THERE ARE NO BARRIERS TO OBTAINING HOUSING BECAUSE OF RACE, COLOR, RELIGION, SEX, HANDICAP, FAMILIAL STATUS OR NATIONAL ORIGIN.

THIS ADVERTISEMENT IS NOT AN OFFERING. ORAL REPRESENTATIONS CANNOT BE RELIED UPON AS CORRECTLY STATING REPRESENTATIONS OF THE DEVELOPER. FOR CORRECT REPRESENTATIONS, MAKE REFERENCE TO THIS BROCHURE AND TO THE DOCUMENTS REQUIRED BY SECTION 718.503, FLORIDA STATUTES, TO BE FURNISHED BY A DEVELOPER TO A BUYER OR LESSEE. THE ARTIST REPRESENTATIONS AND INTERIOR DECORATIONS, FINISHES, APPLIANCES AND FURNISHINGS ARE PROVIDED FOR ILLUSTRATIVE PURPOSES ONLY. DEVELOPER MAKES NO REPRESENTATIONS OR WARRANTIES EXCEPT AS MAY BE SET FORTH IN THE OFFERING PLAN. DEVELOPER RESERVES THE RIGHT TO SUBSTITUTE MATERIALS, APPLIANCES, EQUIPMENT, FIXTURES AND OTHER CONSTRUCTION AND DESIGN DETAILS SPECIFIED HEREIN WITH SIMILAR MATERIALS, APPLIANCES, EQUIPMENT AND/OR FIXTURES OF SUBSTANTIALLY EQUAL OR BETTER QUALITY. ALL DIMENSIONS ARE APPROXIMATE AND SUBJECT TO NORMAL CONSTRUCTION VARIANCES AND TOLERANCES. SQUARE FOOTAGE EXCEEDS THE USABLE FLOOR AREA. DEVELOPER RESERVES THE RIGHT TO MAKE CHANGES IN ACCORDANCE WITH THE TERMS OF THE OFFERING PLAN. PLANS AND DIMENSIONS MAY CONTAIN MINOR VARIATIONS FROM FLOOR TO FLOOR. REFER TO [WWW.AVENIAAVENTURA.COM](http://WWW.AVENIAAVENTURA.COM) FOR FULL LEGAL DISCLAIMERS.